

Short Report



Arminiusmarkthalle | ©Marina Rochel

Arminiusmarkthalle (MFM Gastro GmbH)

Bughenagenstr 19
10551 Berlin

info@markthalleberlin.com
[https://
www.markthalleberlin.com](https://www.markthalleberlin.com)

Welcome!

Eat, Drink & Events

The **Hofladen** is a German restaurant with charm: hearty, down-to-earth, tasty. On the menu you will find a selection of schnitzel with homemade potato salads, Kässpätzle, goulash or even vegetarian dishes.

Fish lovers will get their money's worth in the **fish restaurant**.

The BBQ restaurant **Smoke and Barrel** serves spare ribs from Swabian-Haellian pork. There are also BBQ treats as part of the Saturday brunch.

Alimentari e Vini serves up traditional country cuisine of Italy 'Cucina Casalinga'. Italian home-style pizza and pasta.

Every Saturday you can also stop by for brunch. More information and opening hours at www.markthalleberlin.com

TEST RESULT

for

Arminiusmarkthalle (MFM Gastro GmbH)

10551 Berlin, Certificate-ID: PA-13459-2023



This offer was classified according to the criteria of the nationwide label

»Tourism for All«

and, in the period from

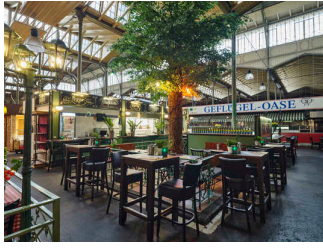
April 2023 – March 2026

is entitled to use the label

»Accessibility checked«

and the associated pictograms

in accordance with the contract.



Fish restaurant (fresh fish and seafood)

copyright by Mike Auerbach



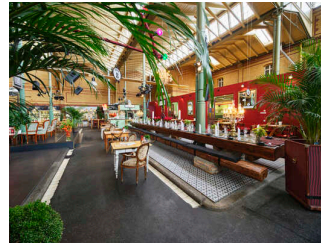
BBQ restaurant
Smoke and Barrel

copyright by Mike Auerbach



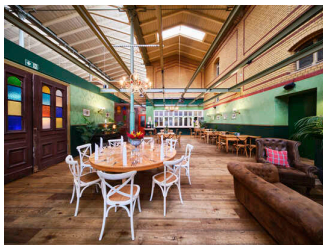
Alimentari e Vini

copyright by Mike Auerbach



German Restaurant
Hofladen (hearty,
down-to-earth,
tasty)

copyright by Mike Auerbach



German Restaurant
Hofladen (hearty,
down-to-earth,
tasty)

copyright by Mike Auerbach

Accessibility at a glance

- Assistance dogs may be brought along.
- Building accessible without steps
- 90 cm minimum width of all raised passageways/doors
- WC for people with disabilities accessible via ramp
- Assistance dogs welcome

Information for people with walking difficulties and wheelchair users

All areas relevant for testing meet the quality criteria of the label "**Accessibility certified – partially accessible for people with walking disabilities and wheelchair users**".

Some **information on accessibility** are listed below. For detailed information please see the evaluation report.

- Two public parking spaces for people with disabilities are available at the corner of Jonasstraße and Arminiusstraße (parking space size: 355 cm x 444 cm, distance to the entrance 50 m).
- The way to the entrances is easy to walk and drive on.
- Access to the market hall is possible without thresholds or steps. At the entrance Bremer Straße there is only one rotation door.
- The fish store restaurant, Trattoria Alimentari e Vini, Smoke Barrel and the farm store were raised.
- Many of the restaurants' tables are located on seating islands that are accessible by at least one step. In the Trattoria Alimentari e Vini and the farm store are tables that are accessible without steps.
- In the separate room of the farm store there are tables that are accessible by wheelchair (maximum height 80 cm, accessible by wheelchair at a height of 67 cm with a depth of 30 cm).
- All passages/doors are at least 90 cm wide.

Public WC for people with disabilities (row 9)

- The ramp to the WC has a maximum slope of 7% and a total length of 4 m.
- The maneuvering spaces are :
in front of the washbasin 150 cm x 150 cm; in front of the WC 199 cm x 139 cm;
to the left of the WC 140 cm x 54 cm; to the right of the WC 0 cm x 54 cm.
- There are grab rails on the left and right side of the WC.
- Both grab rails are flipped up.
- The sink has limited access.
- There is a cord as an alarm trigger.

Information for people with hearing impairments and deaf people

Some **information on accessibility** are listed below. Detailed information can be found in the test report at the end of the text.

- In the event of an audible alarm, no visually perceptible flashing or strobe signal appears.
- The fish shop–restaurant, Trattoria Alimentari e Vini, Smoke Barrel and the farm store were surveyed.
- The restaurants have tables with bright, glare–free lighting with no lamps on or hanging from them to restrict the field of vision.
- There are seating areas with low ambient noise.

Information for visually impaired and blind people

Some **information on accessibility** are listed below. Detailed information can be found in the test report at the end of the text.

- Assistance dogs may be brought along.
- The entrances are visually contrasting.
- The fish shop–restaurant, Trattoria Alimentari e Vini, Smoke Barrel and the farm store were raised.
- Rooms and hallways are brightly lit with glare–free lighting.
- Steps to seating islands are visually apparent. Handrails are not present.
- The two steps to the restroom have visually contrasting edges with the horizontal and vertical step surfaces.
- The font on the menu is unadorned and visually contrasting.
- There is no Braille or prismatic information available.

Information for guests with cognitive impairments

Some **information on accessibility** are listed below. Detailed information can be found in the test report at the end of the text.

- The name and logo of the restaurants are clearly recognizable in some cases.

- The destination of the path is within sight or path signs at a visible distance are present.
- There is no information in plain language.
- There is no menu with pictures.

Image Gallery

We have put together some photos from the company / offer for you. You can find more photos in the detailed reports.



Entrance
Burgenhagenstraße

©Marina Rochel



Entrance
Arminiusstraße

©Marina Rochel



Trattoria Alimentari e
Vini

©Marina Rochel



"Fischladen
Restaurant"

©Marina Rochel



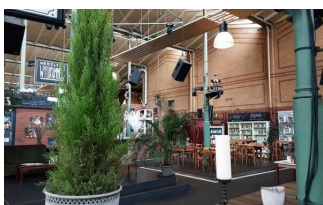
Smoke & Barrel

©Marina Rochel



"Der Hofladen"

©Marina Rochel



"Der Hofladen"

©Marina Rochel



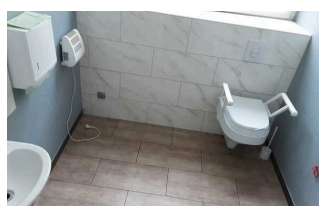
"Der Hofladen"

©Marina Rochel



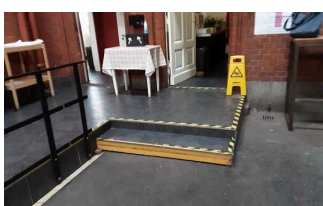
"Der Hofladen"

©Marina Rochel



Public toilet

©Marina Rochel



Public toilet

©Marina Rochel

Information on the "Tourism for All" labeling system

All establishments and locations certified with the label "Tourism for All" meet the following quality criteria:

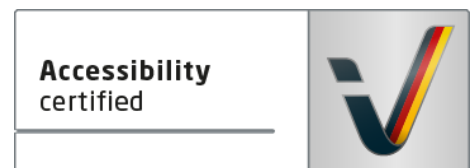
- Data and information on accessibility are collected and checked on site by **external, specially trained evaluators**. The method is not based on self-assessments.
- Data on accessibility is available **in detail** and can be viewed by the guests.
- At least one staff member has successfully passed a **training** on "**Accessibility as a comfort and quality feature**".

The labeling – explanation of the logos and pictograms

The label "**Information about Accessibility**" indicates that detailed and verified information on accessibility is available for all groups of people.



The label "**Accessibility certified**" is based on "Information about Accessibility". It means that the quality criteria defined for specific groups of people are met partially or completely.



The label "**Accessibility certified**" is available in two requirement levels:

"Accessibility certified: partially accessible".

The quality criteria are partially fulfilled for the pictured group of people, i.e. the establishment/location is partially accessible for wheelchair users. The "i" in the pictogram indicates that it is recommended to read again carefully whether the offer meets all (your or the guest's) individual requirements.



"Accessibility certified: accessible".

The quality criteria are fulfilled for the pictured group of people, i.e. the establishment/location is accessible for wheelchair users.



There are defined quality criteria for **seven groups of people** and a **specific pictogram** for each group.

People with walking disabilities



Wheelchair users



People with hearing impairment



Deaf people



People with visual impairments



Blind people



People with cognitive impairments

